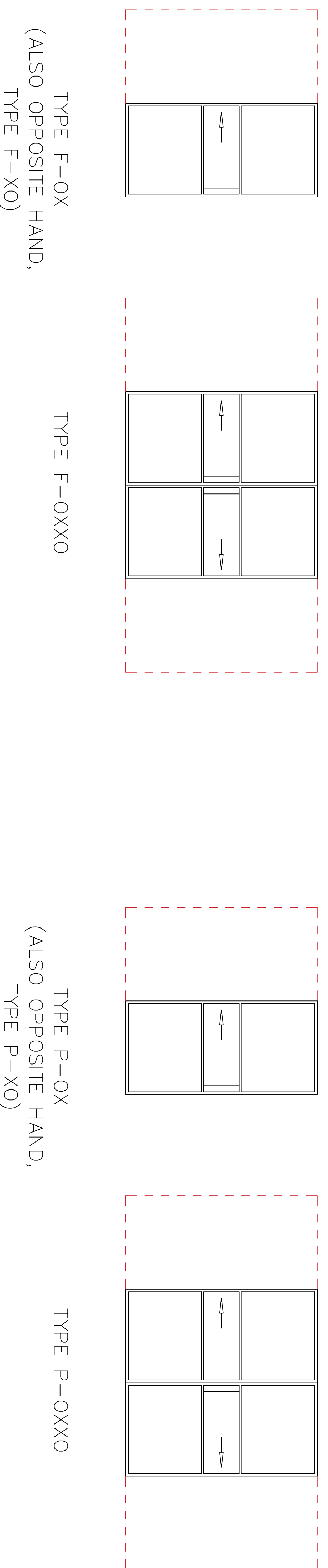


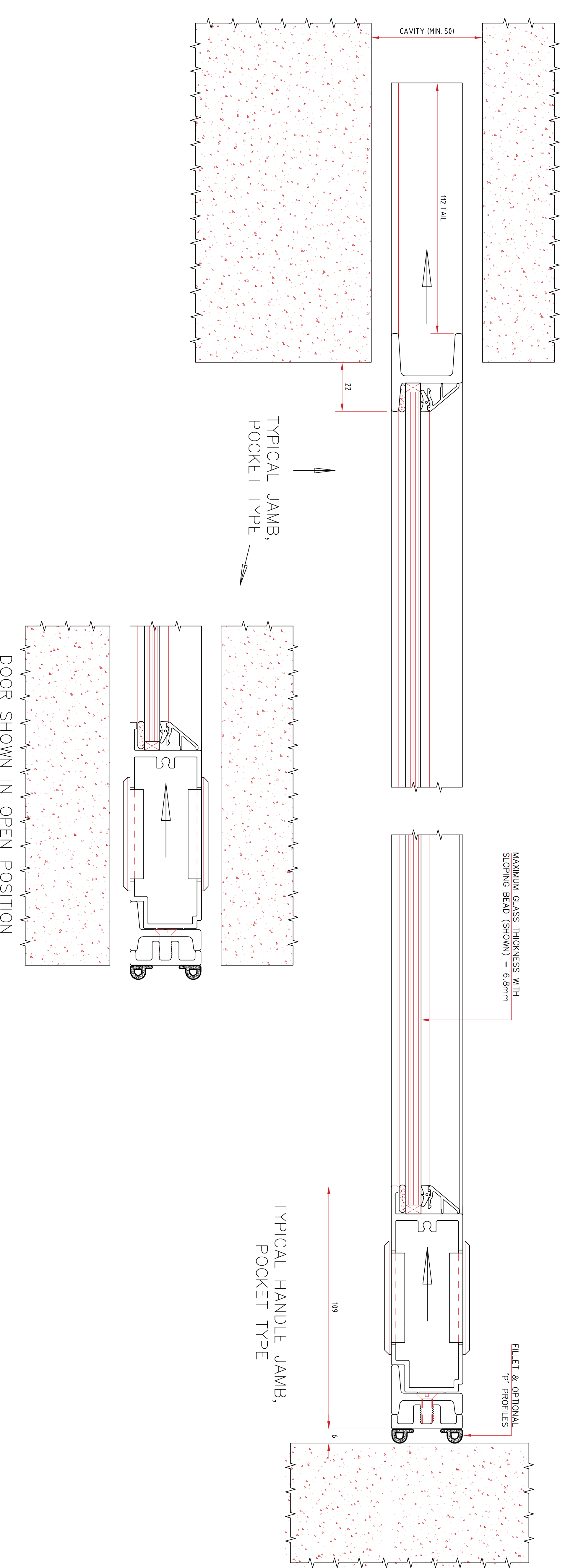
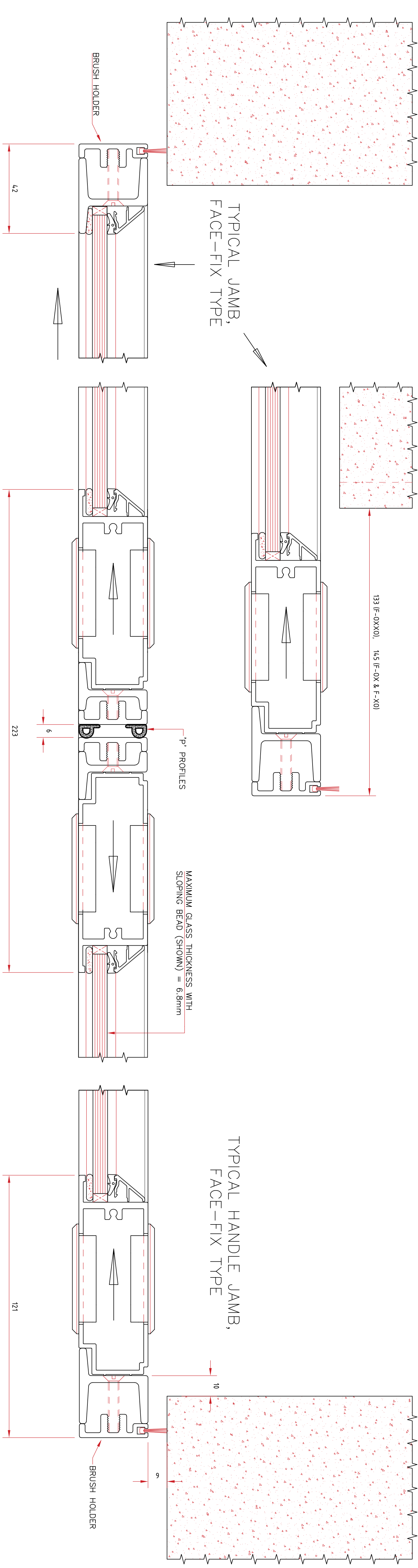
TYPE F = FACE-FIX; TYPE P = POCKET DOOR
 ADDITIONAL GLAZING BARS MAY BE SPECIFIED, AS REQUIRED



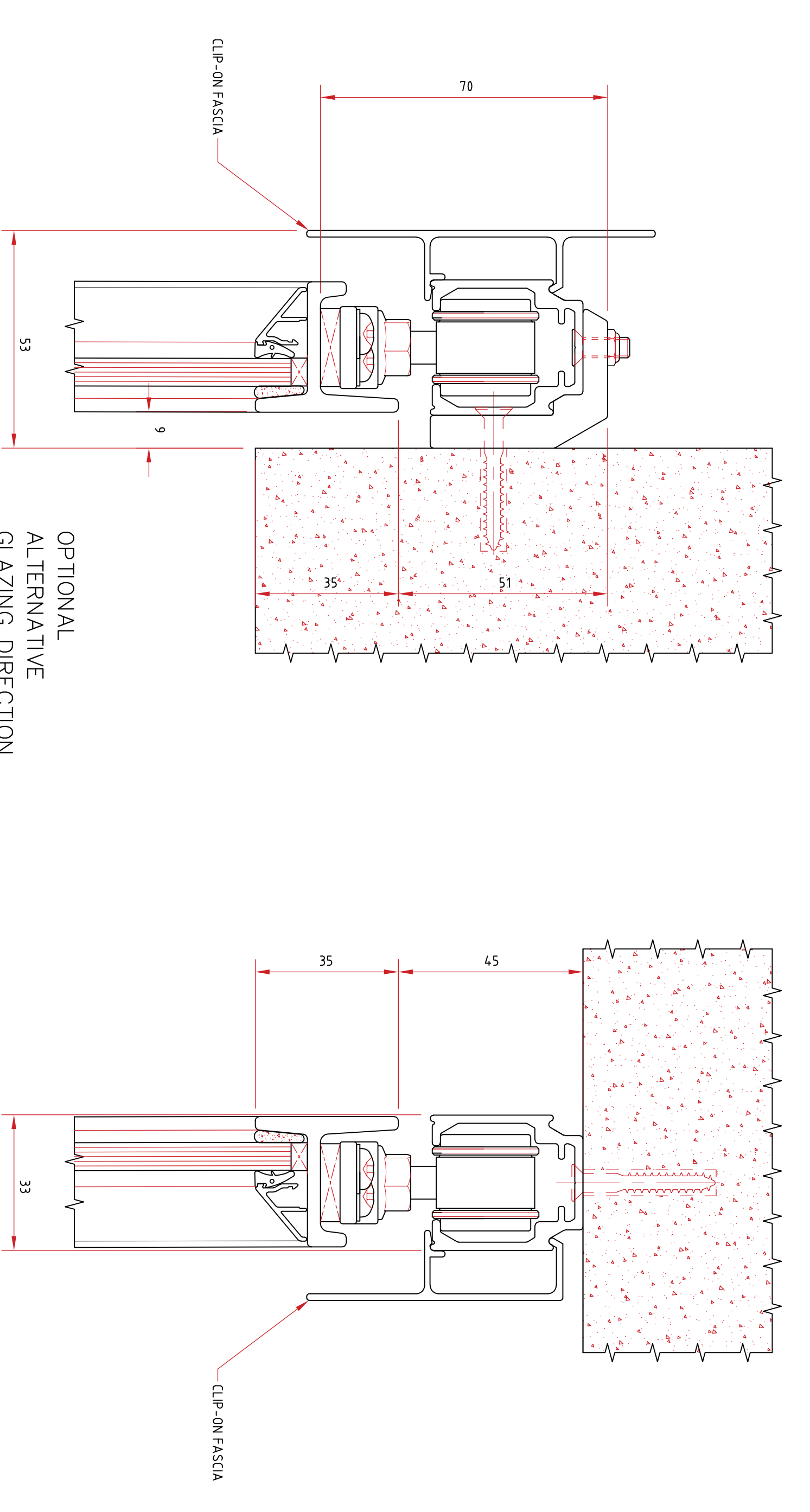
FACE-FIX TYPES

POCKET TYPES

DOOR SHOWN IN OPEN POSITION



TYPICAL HEAD DETAIL
OPTION, FACE-FIX TYPES



OPTIONAL
ALTERNATIVE
GLAZING DIRECTION
SHOWN
(AVAILABLE FOR
ALL TYPES)

